

Bi-Static MW Barrier-300K

Digital Long Range Microwave System for Perimeter Intrusion Detection

OVERVIEW

VNL's Long Range Microwave Barrier is a bi-station microwave Barrier for outdoor applications. It comprises a transmitter (T) and receiver (R) which, when mounted facing each other, create a perimeter protection with coverage of up to 300m. It is an advanced detector utilizing state of the art Microwave technology eliminating false alarms while maintaining high security standards for the detection of human intruders into a protected area.

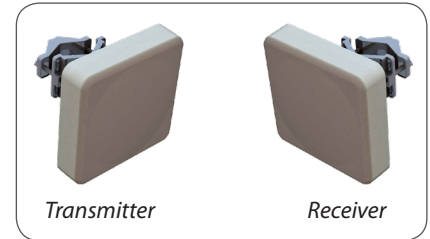
It is designed to protect large areas and can easily be installed on any type of fence. Several such systems can be combined in order to provide a complete perimeter protection in wide open areas with unlimited space or shape.

The system is designed for continuous round-the-clock operation and keeps its characteristics within a wide temperature range.

Combined with Active IR Barrier to Form Dual Technology Motion Barrier (Integral Part of IS-100K).

FEATURES

- Detect Human Walking, Running or Crawling
- Quick and Easy Installation on Pole, Fence or Wall
- Easy Configuration
- Sensitivity Adjustment
- Excellent Detection Probability
- Low False Alarm Rate
- Immunity from Birds and Small Animals (Like a Cat / Dog)
- Very Low Power Consumption
- Maintenance Free Operation
- Unique Waterproof Sealed Plastic Design
- Automatic Range Adjustment
- RFI and EMI Immunity



Bi-Static MW Barrier-300K

KEY MARKETS AND APPLICATIONS

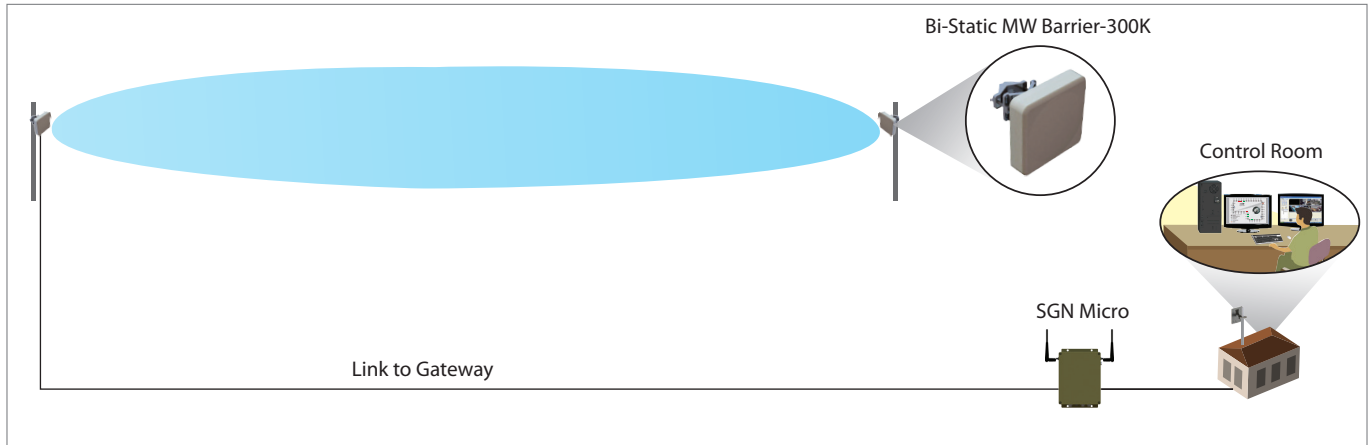
- Critical infrastructure Protection
- Industrial Plants
- Cell/ BTS Sites
- Correctional Facilities
- Perimeter protection of Strategic & High Security Zones
- Farms & Private Properties
- Perimeter Protection of Wide Open Areas
- Border Protection

CONNECTIVITY ARCHITECTURE

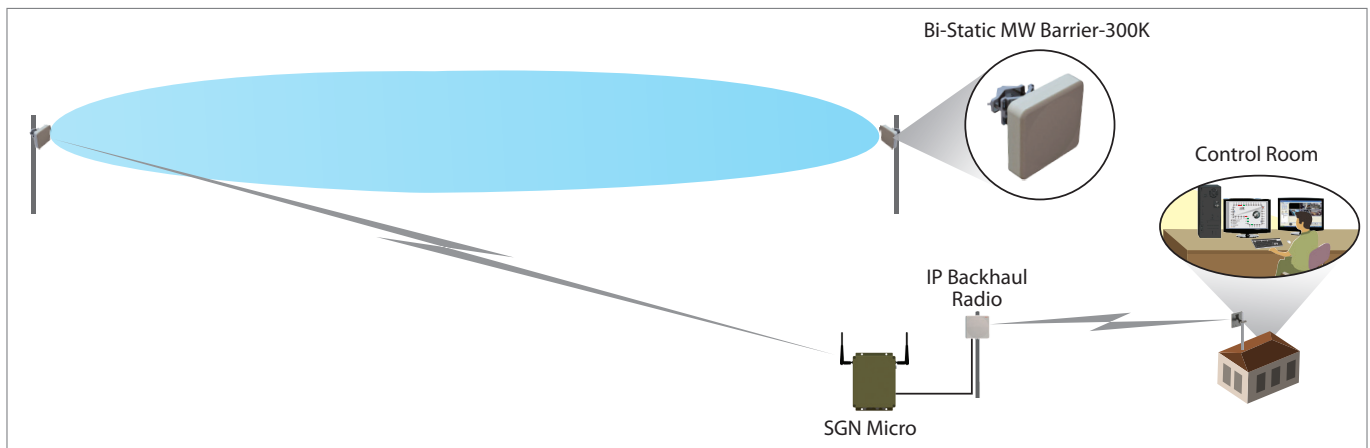
	MICROWAVE BARRIER	COMMAND & CONTROL
Sensor Gateway Node (Wired)	Wired	Wired
Sensor Gateway Node (Wireless)	Wireless	Option 1: Wired Option 2: Wireless via IP Backhaul

Bi-Static MW Barrier-300K

SPECIFICATIONS



Bi-Static MW Barrier Deployment Diagram (Wired Connectivity with Sensor and C2)



Bi-Static MW Barrier Deployment Diagram (Wireless Connectivity with Sensor and C2)

GENERAL SPECIFICATIONS	
Frequency Range	K Band
Detection Method	Volumetric RF
Detection Range	Up to 300 m
Movement Detection Speed	0 - 15 m/s
Warm Up Time	Up to 60 Seconds
Detection Zone Height	Up to 5 Meters
Detection Zone Width	Up to 6 Meters
Restoration Time	< 10 Second
Power Supply	10 - 60 VDC

GENERAL SPECIFICATIONS	
Protection	IP 65 Compliant
Relative Humidity	Up to 95% Non Condensing
Temperature	-20 °C to 55 °C
Temperature Compensation	Dual Slope Compensation
Interference Protection	RFI / EMI
Adjacent Channel Frequency Gap	1 MHz
No. of Frequency Channels	250
Communication Interface	RS485

Shyam logo and VNL logo are registered trademarks of Vihaan Networks Limited. Shyam VNL assumes no responsibility for any inaccuracies in this document and reserves the right to revise this document without notice.

VNL-BR-Bi-Static MW Barrier-300K | May 2019 | PA11

© 2019 VNL | All rights reserved

CORPORATE HEADQUARTERS

Vihaan Networks Limited
 VNL, 21-B, Sector 18, Udyog Vihar
 Gurgaon 122 015, Haryana, INDIA
 Tel +91 124 265 7600
www.vnl.in

